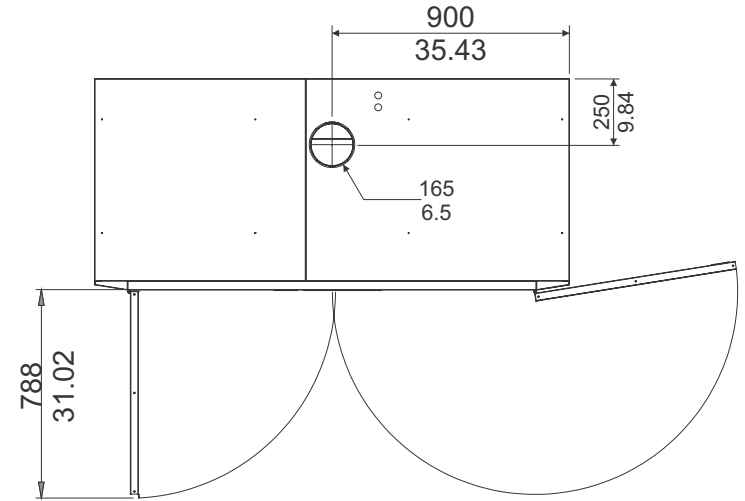
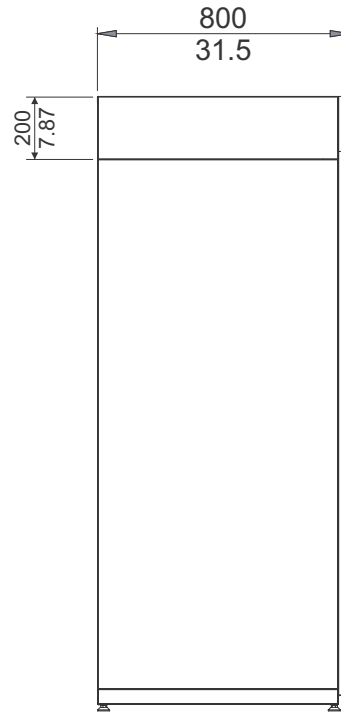
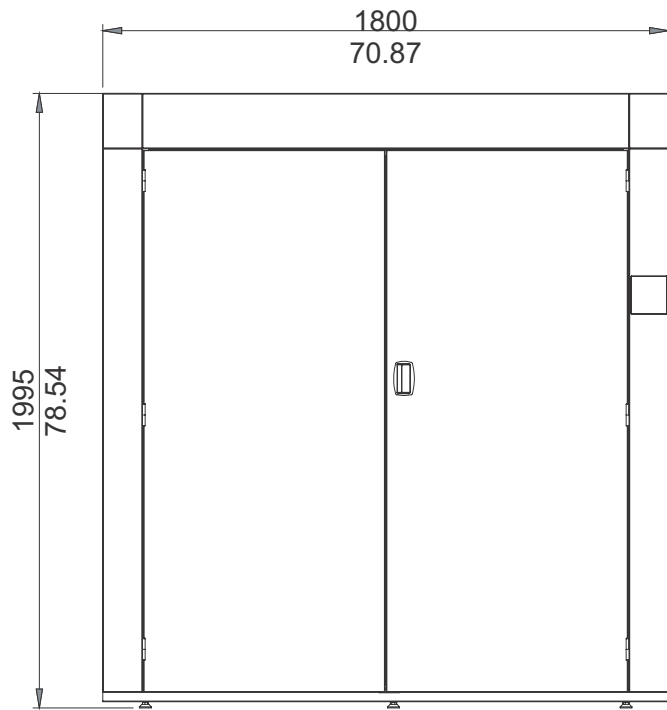


A



Loading Capacity, Number of Suits	quantity		6	
Air Flow	cu m/min	cu ft/min	10	350
Heating Power	kW		12 kW	
Net Weight	kg	lbs	230	506
Electrical Requirements				
208-230V, 50/60Hz, 1PH	Amp	Breaker	66	70
208-230V, 50/60Hz, 3PH	Amp	Breaker	35	40
380-460V, 50/60Hz, 3PH	Amp	Breaker	17	20

Flat pack shipping crate dimensions:
74.5W x 30.5D x 42H

REV	BY	DATE	REV. DESCRIPTION
A4	AFA	05-11-2015	Added flat pack specs
DRAWN BY		DATE	 Panama City, FL Phone: 850-249-2222 Fax: 850-249-2226 www.bandctech.com
A. Adcock		11-21-2013	
CHECKED BY		DATE	
C. Oswald		11-21-2013	
DESCRIPTION			
General Technical Specifications FC Series PPE Drying Cabinet			
DATE	FILE NAME	SHEET	
11-21-2013	FCGenSpec.cdr	1 OF 1	