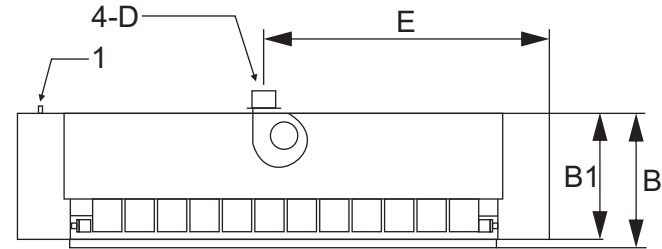
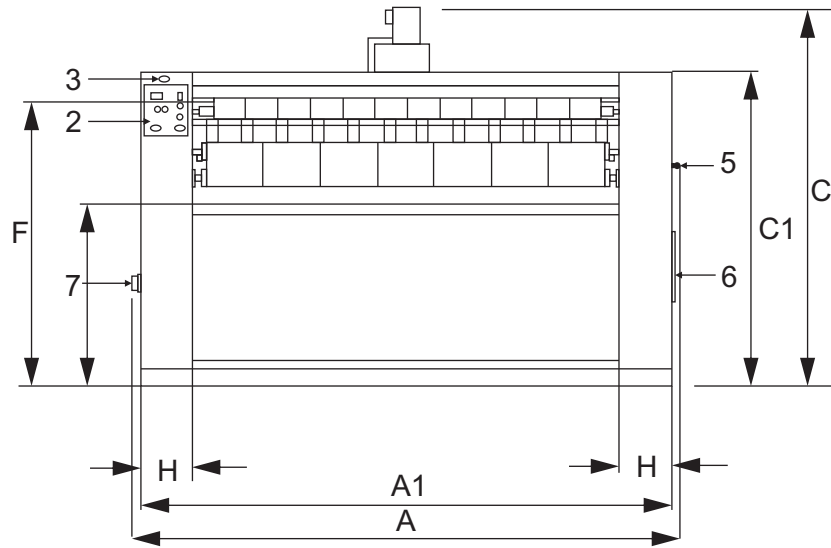


A



- 1. Electrical connection
- 2. Control panel
- 3. Emergency stop
- 4. Exhaust
- 5. Manual lever
- 6. Manual cover
- 7. Main switch

Machine	Units		A		B		C		A1		B1		C1		D		E		F		G	
IC-855	mm	in	1885	74.21	448	17.64	1335	52.56	1878	73.94	444	17.48	1110	43.70	83	3.85	1020	40.16	1000	39.37	635	25.00

	Metric	USA	IC-855	
Width	mm	in	1862	73.31
Depth	mm	in	484	19.06
Height	mm	in	985	38.78
Net Weight	kg	lbs	134	294.8

Shipping Info				
Width	mm	in	1890	74.41
Depth	mm	in	540	21.26
Height	mm	in	1130	44.49
Shipping Weight	kg	lbs	154	338.8
Shipping Volume	m3	ft3	1.15	40.61

	Metric	USA	IC-855	
Motor Power	kW	HP	0.18	0.24
Heating Power	kW		7	
Total Power	kW		7.18	

Electrical Requirement		
Breaker Size, 230VAC, 3PH	A	20
Breaker Size, 230VAC, 1PH	A	40

	Metric	USA	IC-855	
Theoretical production	kg/hr	lb/hr	40	88
Roller Ø	mm	in	250	8
Working width (mm)	mm	in	1400	55
Working speed (m/min)	m/min	ft/min	4.2	14
Sound level (dB)	dB		55	

Note: Allow a minimum of 36" (900mm) at the sides of the machine and 10" (250mm) at the rear for service clearance

REV	BY	DATE	REV. DESCRIPTION
A1	AFA	5-19-2023	Created
DRAWN BY		DATE	 Panama City, FL Phone: 850-249-2222 Fax: 850-249-2226 www.bandctech.com
A. Adcock		5-19-2023	
CHECKED BY		DATE	
P. Noblit		5-19-2023	
DESCRIPTION			
General Technical Specifications IC-8 General Specifications			
DATE	FILE NAME	SHEET	
11-2-2005	IC-8-Commercial-Ironer-General-Specifications.cdr	1 OF 1	